

LX MMA CORP.

58, Yeosusandan 4-ro
Yeosu-si, Jeollanam-do
Korea



The following sample(s) was/were submitted and identified by/on behalf of the client as:-

SGS File No. : AYAA22-04211
Product Name : HI835MS
Item No./Part No. : N/A
Received Date : 2022. 01. 17
Test Period : 2022. 01. 17 to 2022. 01. 24
Test Results : For further details, please refer to following page(s)

SGS Korea Co., Ltd.



Tommy Oh / Chemical Lab Mgr

This document is issued by the Company subject to its General Conditions of Service printed overleaf, available on request or accessible at <http://www.sgs.com/en/Terms-and-Conditions.aspx> and, for electronic format documents, subject to Terms and Conditions for Electronic Documents at <https://www.sgs.com/en/terms-and-conditions/terms-e-document>. Attention is drawn to the limitation of liability, indemnification and jurisdiction issues defined therein. Any holder of this document is advised that information contained hereon reflects the Company's findings at the time of its intervention only and within the limits of Client's instructions, if any. The Company's sole responsibility is to its Client and this document does not exonerate parties to a transaction from exercising all their rights and obligations under the transaction documents. This document cannot be reproduced except in full, without prior written approval of the Company. Any unauthorized alteration, forgery or falsification of the content or appearance of this document is unlawful and offenders may be prosecuted to the fullest extent of the law. Unless otherwise stated the results shown in this test report refer only to the sample(s).



Test Report No. F690101/LF-CTSAYAA22-04211

Issued Date : 2022. 01. 24

Page 2 of 8

Sample No. : AYAA22-04211.001
Sample Description : HI835MS
Item No./Part No. : N/A
Materials : N/A

Heavy Metals

Test Items	Unit	Test Method	MDL	Results
Cadmium (Cd)	mg/kg	With reference to IEC 62321-5 : 2013, by ICP-OES	0.5	N.D.
Lead (Pb)	mg/kg	With reference to IEC 62321-5 : 2013, by ICP-OES	5	N.D.
Mercury (Hg)	mg/kg	With reference to IEC 62321-4 : 2013+AMD1:2017CVS, by ICP-OES	2	N.D.
Hexavalent Chromium (Cr VI)*	mg/kg	With reference to IEC 62321-7-2 : 2017, by UV-Vis and/or with reference to IEC 62321-5 : 2013, by ICP-OES	8	N.D.

Flame Retardants-PBBs/PBDEs

Test Items	Unit	Test Method	MDL	Results
Monobromobiphenyl	mg/kg	With reference to IEC 62321-6 : 2015, by GC-MS	5	N.D.
Dibromobiphenyl	mg/kg	With reference to IEC 62321-6 : 2015, by GC-MS	5	N.D.
Tribromobiphenyl	mg/kg	With reference to IEC 62321-6 : 2015, by GC-MS	5	N.D.
Tetrabromobiphenyl	mg/kg	With reference to IEC 62321-6 : 2015, by GC-MS	5	N.D.
Pentabromobiphenyl	mg/kg	With reference to IEC 62321-6 : 2015, by GC-MS	5	N.D.
Hexabromobiphenyl	mg/kg	With reference to IEC 62321-6 : 2015, by GC-MS	5	N.D.
Heptabromobiphenyl	mg/kg	With reference to IEC 62321-6 : 2015, by GC-MS	5	N.D.
Octabromobiphenyl	mg/kg	With reference to IEC 62321-6 : 2015, by GC-MS	5	N.D.
Nonabromobiphenyl	mg/kg	With reference to IEC 62321-6 : 2015, by GC-MS	5	N.D.
Decabromobiphenyl	mg/kg	With reference to IEC 62321-6 : 2015, by GC-MS	5	N.D.
Monobromodiphenyl ether	mg/kg	With reference to IEC 62321-6 : 2015, by GC-MS	5	N.D.
Dibromodiphenyl ether	mg/kg	With reference to IEC 62321-6 : 2015, by GC-MS	5	N.D.
Tribromodiphenyl ether	mg/kg	With reference to IEC 62321-6 : 2015, by GC-MS	5	N.D.
Tetrabromodiphenyl ether	mg/kg	With reference to IEC 62321-6 : 2015, by GC-MS	5	N.D.
Pentabromodiphenyl ether	mg/kg	With reference to IEC 62321-6 : 2015, by GC-MS	5	N.D.
Hexabromodiphenyl ether	mg/kg	With reference to IEC 62321-6 : 2015, by GC-MS	5	N.D.
Heptabromodiphenyl ether	mg/kg	With reference to IEC 62321-6 : 2015, by GC-MS	5	N.D.
Octabromodiphenyl ether	mg/kg	With reference to IEC 62321-6 : 2015, by GC-MS	5	N.D.
Nonabromodiphenyl ether	mg/kg	With reference to IEC 62321-6 : 2015, by GC-MS	5	N.D.
Decabromodiphenyl ether	mg/kg	With reference to IEC 62321-6 : 2015, by GC-MS	5	N.D.

This document is issued by the Company subject to its General Conditions of Service printed overleaf, available on request or accessible at <http://www.sgs.com/en/Terms-and-Conditions.aspx> and, for electronic format documents, subject to Terms and Conditions for Electronic Documents at <https://www.sgs.com/en/terms-and-conditions/terms-e-document>. Attention is drawn to the limitation of liability, indemnification and jurisdiction issues defined therein. Any holder of this document is advised that information contained hereon reflects the Company's findings at the time of its intervention only and within the limits of Client's instructions, if any. The Company's sole responsibility is to its Client and this document does not exonerate parties to a transaction from exercising all their rights and obligations under the transaction documents. This document cannot be reproduced except in full, without prior written approval of the Company. Any unauthorized alteration, forgery or falsification of the content or appearance of this document is unlawful and offenders may be prosecuted to the fullest extent of the law. Unless otherwise stated the results shown in this test report refer only to the sample(s).

Sample No. : AYAA22-04211.001
Sample Description : HI835MS
Item No./Part No. : N/A
Materials : N/A

Phthalates

Test Items	Unit	Test Method	MDL	Results
Di-(2-ethylhexyl) phthalate (DEHP)	mg/kg	With reference to IEC 62321-8 : 2017, by GC-MS	50	N.D.
Di-butyl phthalate (DBP)	mg/kg	With reference to IEC 62321-8 : 2017, by GC-MS	50	N.D.
Benzyl butyl phthalate (BBP)	mg/kg	With reference to IEC 62321-8 : 2017, by GC-MS	50	N.D.
Di-isobutyl phthalate (DIBP)	mg/kg	With reference to IEC 62321-8 : 2017, by GC-MS	50	N.D.
Di-isodecyl phthalate (DIDP)	mg/kg	With reference to IEC 62321-8 : 2017, by GC-MS	50	N.D.
Di-isononyl phthalate (DINP)	mg/kg	With reference to IEC 62321-8 : 2017, by GC-MS	50	N.D.
Di-n-octyl phthalate (DNOP)	mg/kg	With reference to IEC 62321-8 : 2017, by GC-MS	50	N.D.
Di-ethyl phthalate (DEP)	mg/kg	With reference to IEC 62321-8 : 2017, by GC-MS	50	N.D.
Di-methyl phthalate (DMP)	mg/kg	With reference to IEC 62321-8 : 2017, by GC-MS	50	N.D.
Di-n-pentyl phthalate (DPP, DnPP)	mg/kg	With reference to IEC 62321-8 : 2017, by GC-MS	50	N.D.
Di-iso-pentyl phthalate (DIPP)	mg/kg	With reference to IEC 62321-8 : 2017, by GC-MS	50	N.D.
Di-n-hexyl phthalate (DNHP)	mg/kg	With reference to IEC 62321-8 : 2017, by GC-MS	50	N.D.
[di(C7-C11 alkyl)phthalate] linear and branched (DHNUP)	mg/kg	With reference to IEC 62321-8 : 2017, by GC-MS	50	N.D.
[di(C6-C8 alkyl)phthalate] branched (DIHP)	mg/kg	With reference to IEC 62321-8 : 2017, by GC-MS	50	N.D.
Bis(2-methoxyethyl) phthalate (BMP, BMEP, DMEP)	mg/kg	With reference to IEC 62321-8 : 2017, by GC-MS	50	N.D.
n-Pentyl-isopentyl phthalate (iPnPP)	mg/kg	With reference to IEC 62321-8 : 2017, by GC-MS	50	N.D.

Halogen Contents

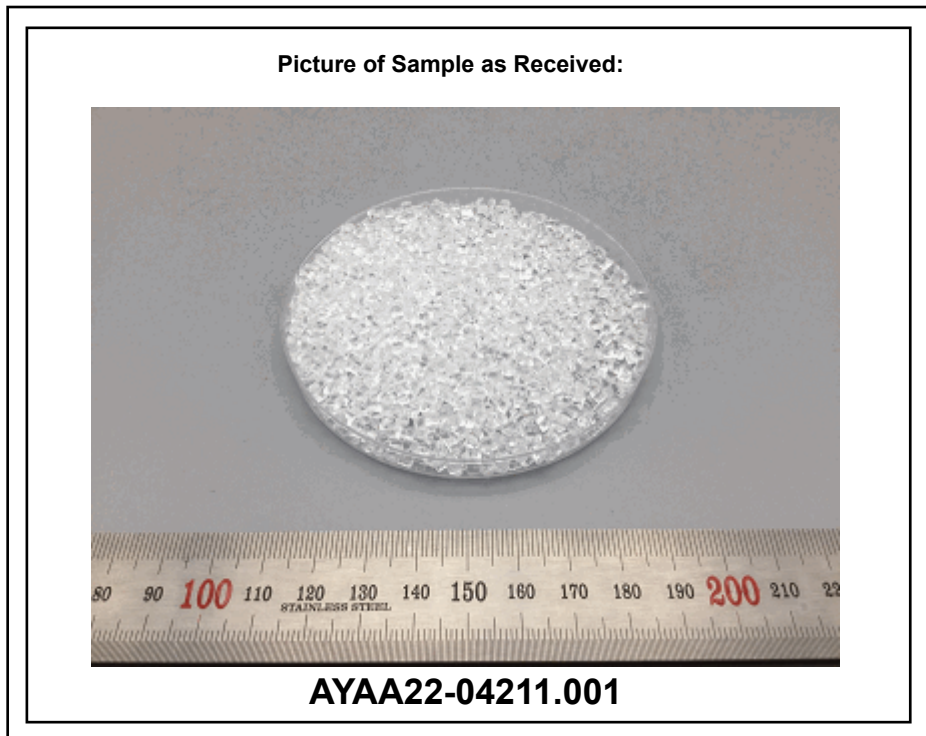
Test Items	Unit	Test Method	MDL	Results
Bromine (Br)	mg/kg	With reference to IEC 62321-3-2 : 2020, by C-IC	30	N.D.
Chlorine (Cl)	mg/kg	With reference to IEC 62321-3-2 : 2020, by C-IC	30	N.D.

Flame Retardants

Test Items	Unit	Test Method	MDL	Results
Hexabromocyclododecane (HBCDD)	mg/kg	With reference to USEPA 3540 C, by LC/MS	5	N.D.

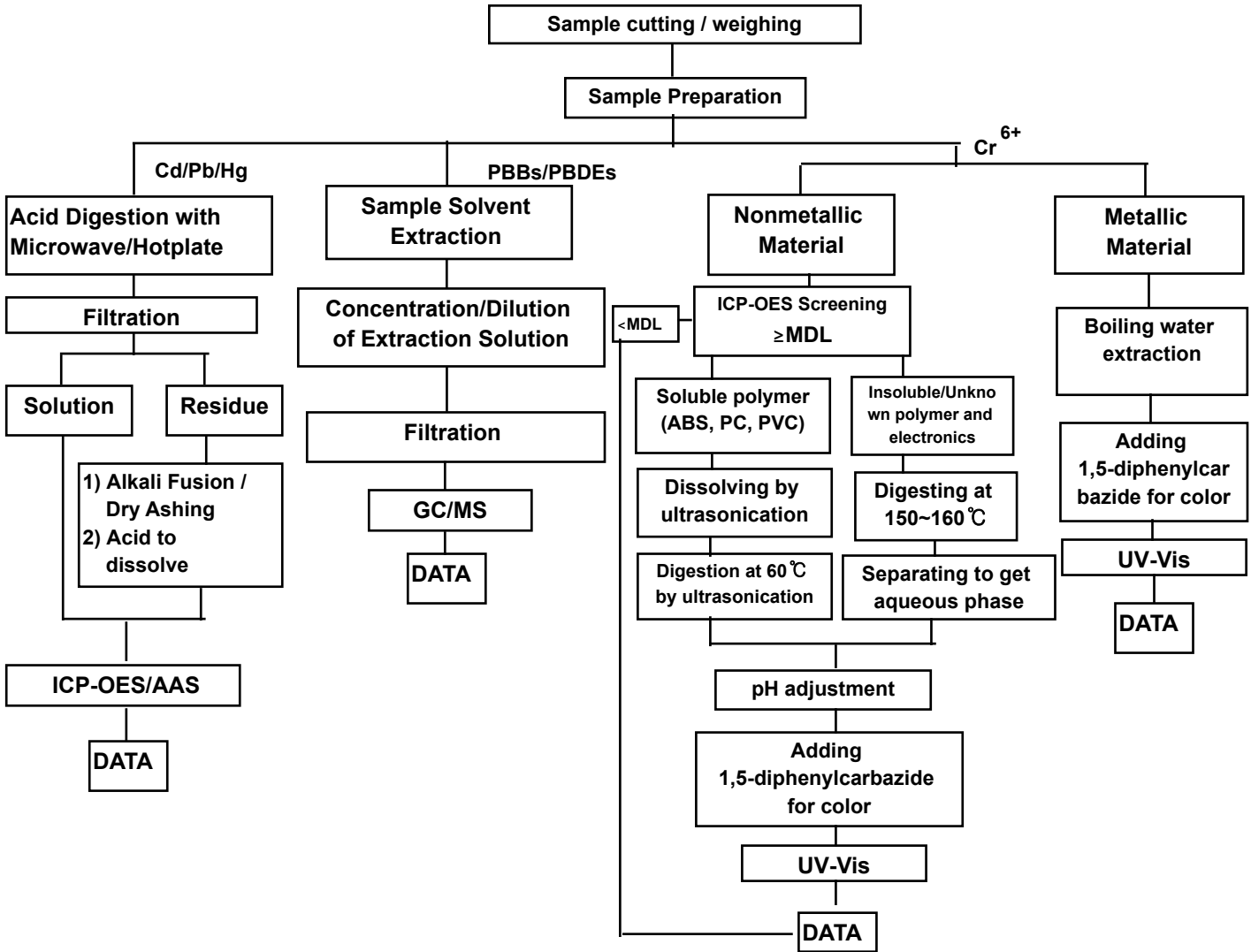
This document is issued by the Company subject to its General Conditions of Service printed overleaf, available on request or accessible at <http://www.sgs.com/en/Terms-and-Conditions.aspx> and, for electronic format documents, subject to Terms and Conditions for Electronic Documents at <https://www.sgs.com/en/terms-and-conditions/terms-e-document>. Attention is drawn to the limitation of liability, indemnification and jurisdiction issues defined therein. Any holder of this document is advised that information contained hereon reflects the Company's findings at the time of its intervention only and within the limits of Client's instructions, if any. The Company's sole responsibility is to its Client and this document does not exonerate parties to a transaction from exercising all their rights and obligations under the transaction documents. This document cannot be reproduced except in full, without prior written approval of the Company. Any unauthorized alteration, forgery or falsification of the content or appearance of this document is unlawful and offenders may be prosecuted to the fullest extent of the law. Unless otherwise stated the results shown in this test report refer only to the sample(s).

- NOTE:
- (1) N.D. = Not detected. (<MDL)
 - (2) mg/kg = ppm, ug/kg = ppb, mg/L = ppm
 - (3) MDL = Method Detection Limit
 - (4) - = No regulation
 - (5) ** = Qualitative analysis (No Unit)
 - (6) Negative = Undetectable / Positive = Detectable
 - (7) * = a. The result of Hexavalent Chromium (Cr(VI)) is "ND" as the result of Chromium (Cr) is "ND", and confirmation test of Hexavalent Chromium (Cr(VI)) is not required.
 b. If the content of Total Chromium (Cr) is greater than the MDL of Hexavalent Chromium (Cr(VI)), it is the result of hexavalent Chromium by UV-VIS.
 - (8) The results shown in this test report refer only to the sample(s) tested unless otherwise stated.
- This test report is not related to Korea Laboratory Accreditation Scheme .



This document is issued by the Company subject to its General Conditions of Service printed overleaf, available on request or accessible at <http://www.sgs.com/en/Terms-and-Conditions.aspx> and, for electronic format documents, subject to Terms and Conditions for Electronic Documents at <https://www.sgs.com/en/terms-and-conditions/terms-e-document> . Attention is drawn to the limitation of liability, indemnification and jurisdiction issues defined therein. Any holder of this document is advised that information contained hereon reflects the Company's findings at the time of its intervention only and within the limits of Client's instructions, if any. The Company's sole responsibility is to its Client and this document does not exonerate parties to a transaction from exercising all their rights and obligations under the transaction documents. This document cannot be reproduced except in full, without prior written approval of the Company. Any unauthorized alteration, forgery or falsification of the content or appearance of this document is unlawful and offenders may be prosecuted to the fullest extent of the law. Unless otherwise stated the results shown in this test report refer only to the sample(s).

Testing Flow Chart for RoHS: Cd/Pb/Hg/Cr⁶⁺ /PBBs&PBDEs Testing

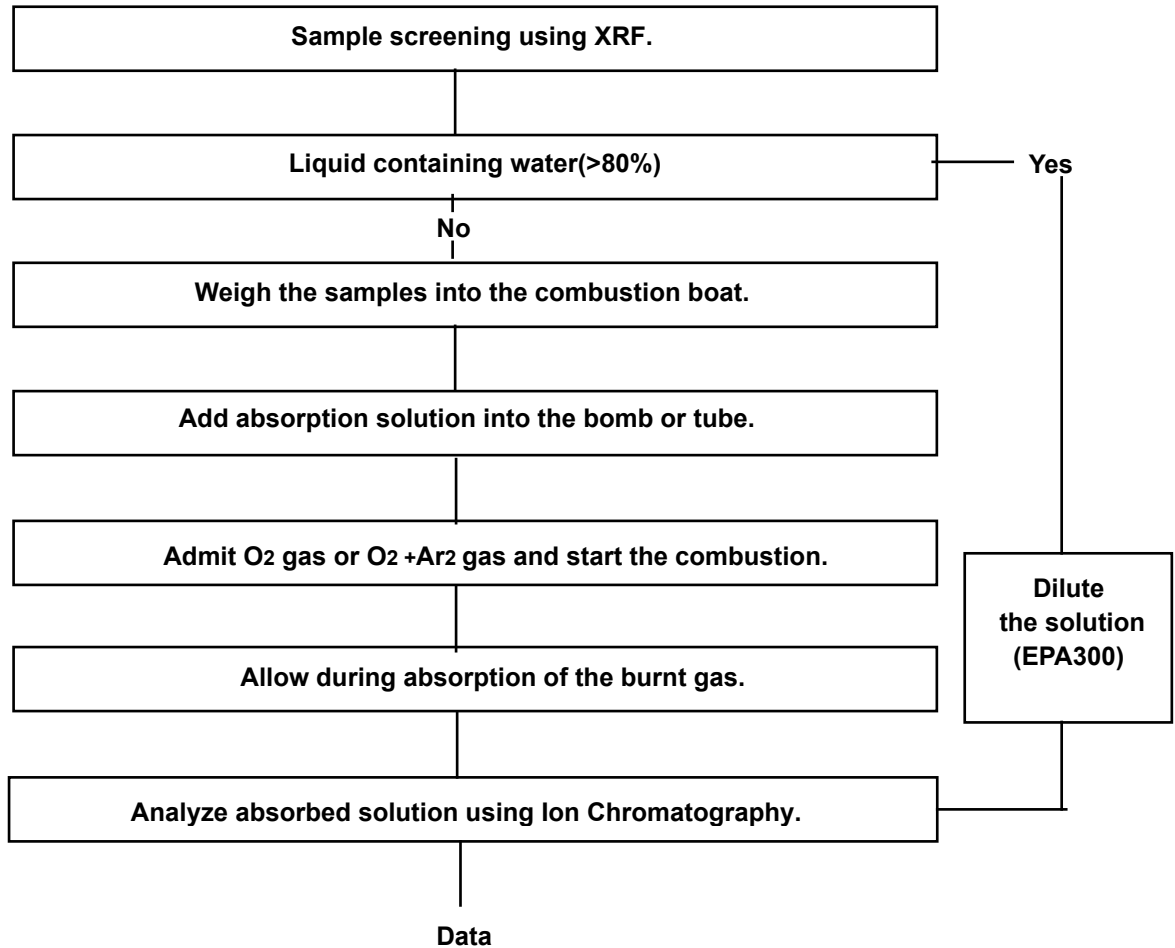


The samples were dissolved totally at the acid digestion step of the above flow chart for Cd,Pb,Hg
 Section Chief : Timothy Jeon

This document is issued by the Company subject to its General Conditions of Service printed overleaf, available on request or accessible at <http://www.sgs.com/en/Terms-and-Conditions.aspx> and, for electronic format documents, subject to Terms and Conditions for Electronic Documents at <https://www.sgs.com/en/terms-and-conditions/terms-e-document>. Attention is drawn to the limitation of liability, indemnification and jurisdiction issues defined therein. Any holder of this document is advised that information contained hereon reflects the Company's findings at the time of its intervention only and within the limits of Client's instructions, if any. The Company's sole responsibility is to its Client and this document does not exonerate parties to a transaction from exercising all their rights and obligations under the transaction documents. This document cannot be reproduced except in full, without prior written approval of the Company. Any unauthorized alteration, forgery or falsification of the content or appearance of this document is unlawful and offenders may be prosecuted to the fullest extent of the law. Unless otherwise stated the results shown in this test report refer only to the sample(s).



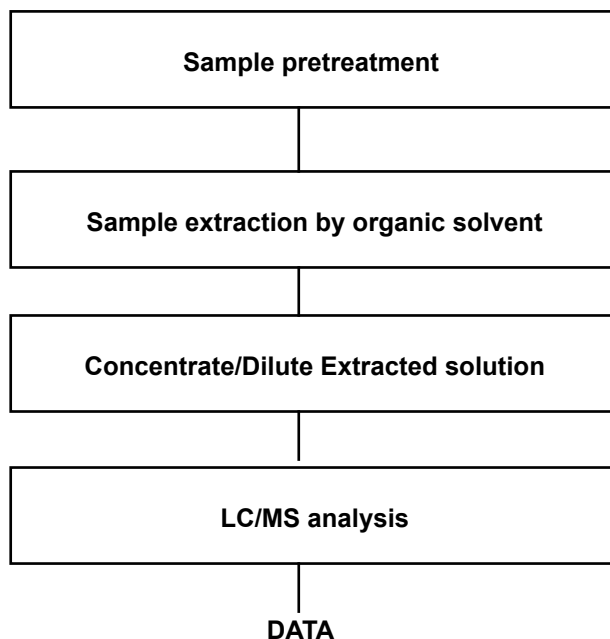
Flow Chart for Halogen Test



This document is issued by the Company subject to its General Conditions of Service printed overleaf, available on request or accessible at <http://www.sgs.com/en/Terms-and-Conditions.aspx> and, for electronic format documents, subject to Terms and Conditions for Electronic Documents at <https://www.sgs.com/en/terms-and-conditions/terms-e-document>. Attention is drawn to the limitation of liability, indemnification and jurisdiction issues defined therein. Any holder of this document is advised that information contained hereon reflects the Company's findings at the time of its intervention only and within the limits of Client's instructions, if any. The Company's sole responsibility is to its Client and this document does not exonerate parties to a transaction from exercising all their rights and obligations under the transaction documents. This document cannot be reproduced except in full, without prior written approval of the Company. Any unauthorized alteration, forgery or falsification of the content or appearance of this document is unlawful and offenders may be prosecuted to the fullest extent of the law. Unless otherwise stated the results shown in this test report refer only to the sample(s).



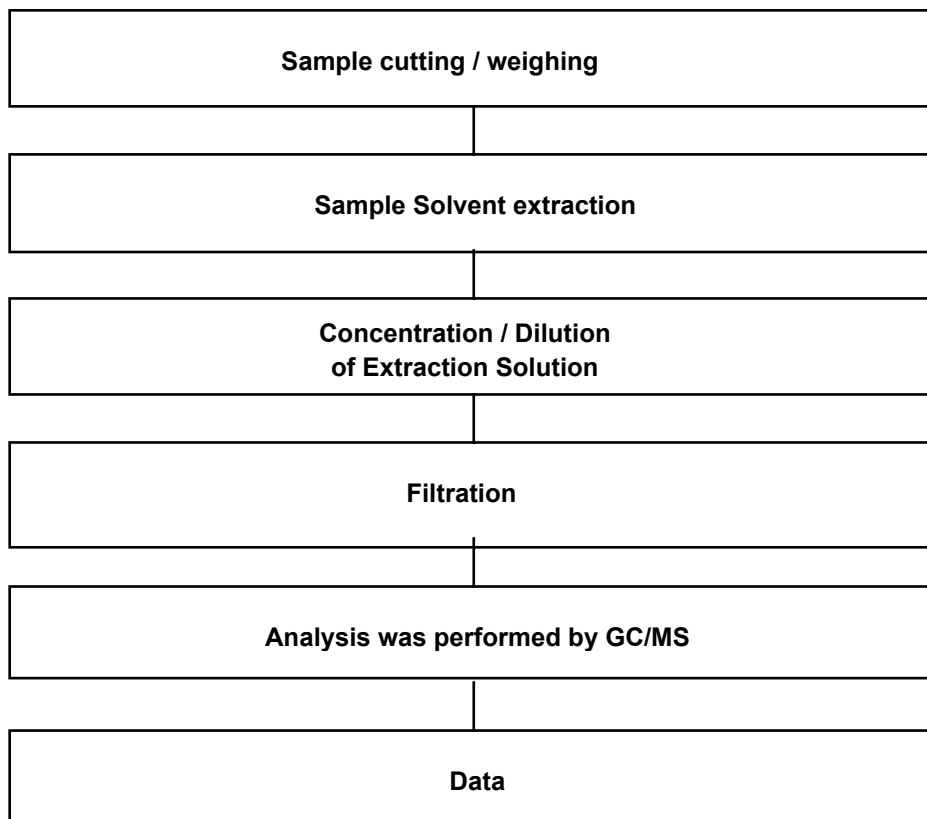
Testing Flow Chart for HBCD



This document is issued by the Company subject to its General Conditions of Service printed overleaf, available on request or accessible at <http://www.sgs.com/en/Terms-and-Conditions.aspx> and, for electronic format documents, subject to Terms and Conditions for Electronic Documents at <https://www.sgs.com/en/terms-and-conditions/terms-e-document>. Attention is drawn to the limitation of liability, indemnification and jurisdiction issues defined therein. Any holder of this document is advised that information contained hereon reflects the Company's findings at the time of its intervention only and within the limits of Client's instructions, if any. The Company's sole responsibility is to its Client and this document does not exonerate parties to a transaction from exercising all their rights and obligations under the transaction documents. This document cannot be reproduced except in full, without prior written approval of the Company. Any unauthorized alteration, forgery or falsification of the content or appearance of this document is unlawful and offenders may be prosecuted to the fullest extent of the law. Unless otherwise stated the results shown in this test report refer only to the sample(s).



Flow Chart for Phthalate Test



*** End of Report ***

This document is issued by the Company subject to its General Conditions of Service printed overleaf, available on request or accessible at <http://www.sgs.com/en/Terms-and-Conditions.aspx> and, for electronic format documents, subject to Terms and Conditions for Electronic Documents at <https://www.sgs.com/en/terms-and-conditions/terms-e-document>. Attention is drawn to the limitation of liability, indemnification and jurisdiction issues defined therein. Any holder of this document is advised that information contained hereon reflects the Company's findings at the time of its intervention only and within the limits of Client's instructions, if any. The Company's sole responsibility is to its Client and this document does not exonerate parties to a transaction from exercising all their rights and obligations under the transaction documents. This document cannot be reproduced except in full, without prior written approval of the Company. Any unauthorized alteration, forgery or falsification of the content or appearance of this document is unlawful and offenders may be prosecuted to the fullest extent of the law. Unless otherwise stated the results shown in this test report refer only to the sample(s).